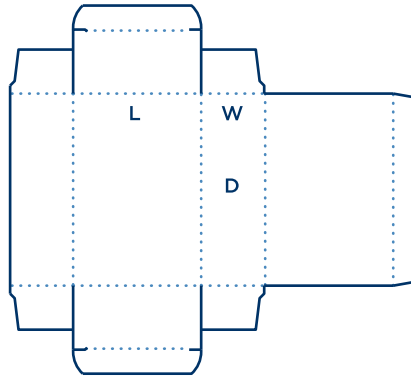
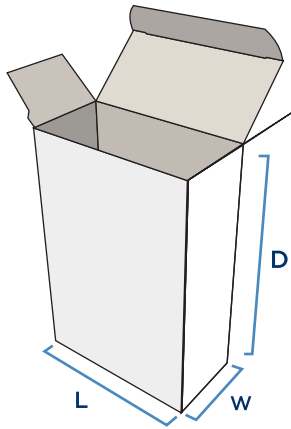
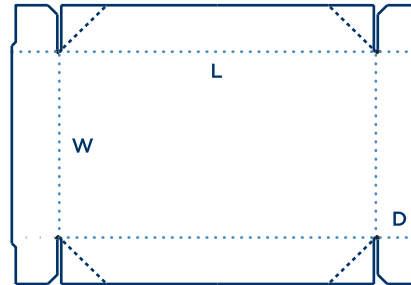
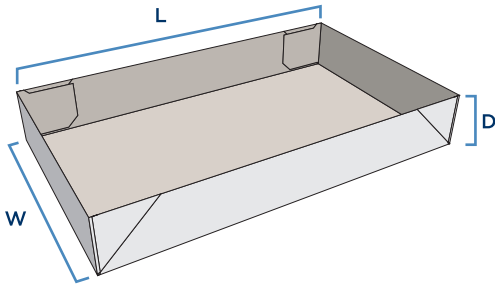


HOW TO MEASURE A FOLDING CARTON

2906 N. Crestline St., Spokane, WA 99207
509 487 1632
www.sonderren.com

1. Measure length first: Open package - the length is the larger of the two dimensions around the open end.
2. Width is the smallest dimension around the open end.
3. Depth is the distance between the two ends.

STE - Straight Tuck Ends**Beers Tray****Roll Over Ends**